



Identifying Lead Service Lines

Help Us Get the Lead Out

Oxford Water Works & Sewer Board needs your help to identify the material of your water service line.

The Environmental Protection Agency (EPA) recently announced changes to drinking water regulations that require water systems to identify all materials used in the construction of all water customer-owned service lines. We've launched a community-wide project to identify what every service line (e.g., pipe that brings water to your home) in our system is made of. Lines can be made of lead, plastic, brass, copper, steel or iron. Lead pipes are the primary source of lead in drinking water. Identifying which lines are lead is an important step to removing this source of lead from our community. The Alabama Department of Environmental Management (ADEM) is requiring Oxford Water Works & Sewer Board to submit a preliminary inventory before October 16, 2024

How is the service line material data being gathered?

We are using several methods to help identify customer service line material type, including reviewing existing records, date of home construction, customer surveys, and field investigations. Field investigations may include in-home inspections and digging small test pits to look at customer service lines.

Customers will be notified within 30 days if lead is determined to be in either the customer or Oxford water owned service line. Oxford is working on developing an online map to show areas that have been determined to be lead-free and those still under investigation.

How you can help!

We ask for your participation in this important effort. Please help us by completing the following survey by scanning the QR Code or visit the website: <https://tinyurl.com/OWWSB>



If we reach out, you can help us by providing information on the age of the house, providing the material type of the customer-owned portion of the service line, allowing access to your home to check service line material, and/or conducting water sampling for lead, if necessary.

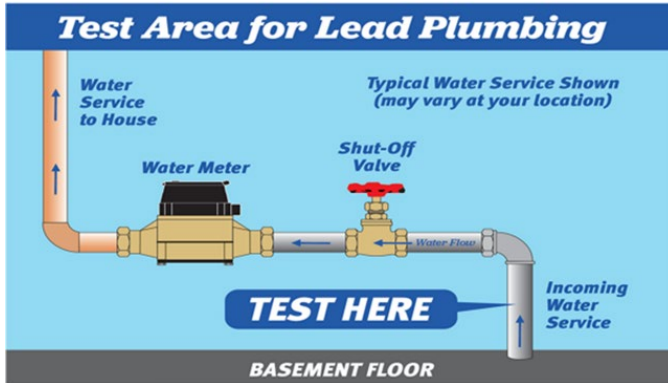
If our representatives visit your home, they will be wearing Oxford Water clothing and will have official documentation for you to review. Please check for proper identification before allowing anyone self-identifying as an Oxford Water System representative into your home or building.

Contact us at:

If you have questions about Oxford's lead service line inventory and replacement efforts, please contact our office at (256) 831-5618.

How to Determine the Material of Your Service Line:

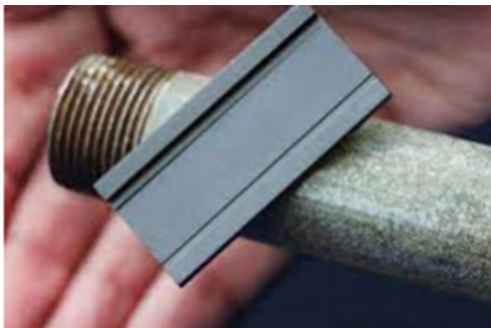
You need to locate the water meter and also find the water pipe coming from the floor or basement wall going into your house.



To find the material of your service line, you must use a magnet and a coin. Gently scratch the surface of the pipe with a coin. If the pipe is soft, easily scratched with a silver shine and a magnet doesn't stick, this is a lead pipe.



If the pipe scratches with a dull color and a magnet sticks to the pipe, this is a galvanized steel pipe.



If the pipe scratches with a color that looks like a penny and a magnet doesn't stick, this is a copper pipe. See picture below.



Additional Resources:

For more information on the health impacts of lead in drinking water visit EPA's website:

<https://www.epa.gov/ground-water-and-drinking-water/basic-information-about-lead-drinking-water>.

For ways EPA, the Alabama Department of Environmental Management (ADEM), and Oxford Water Works & Sewer Board are working toward eliminating lead exposure from lead service lines, visit <https://www.epa.gov/ground-water-and-drinking-water/basic-information-about-lead-drinking-water> and [Alabama Department of Environmental Management](#).

What happens next?

Oxford Water Works & Sewer Board will continue to update its customers with information about the Service Line Inventory. Please check back frequently to our website (www.oxfordwater.com) to see all updated data.

